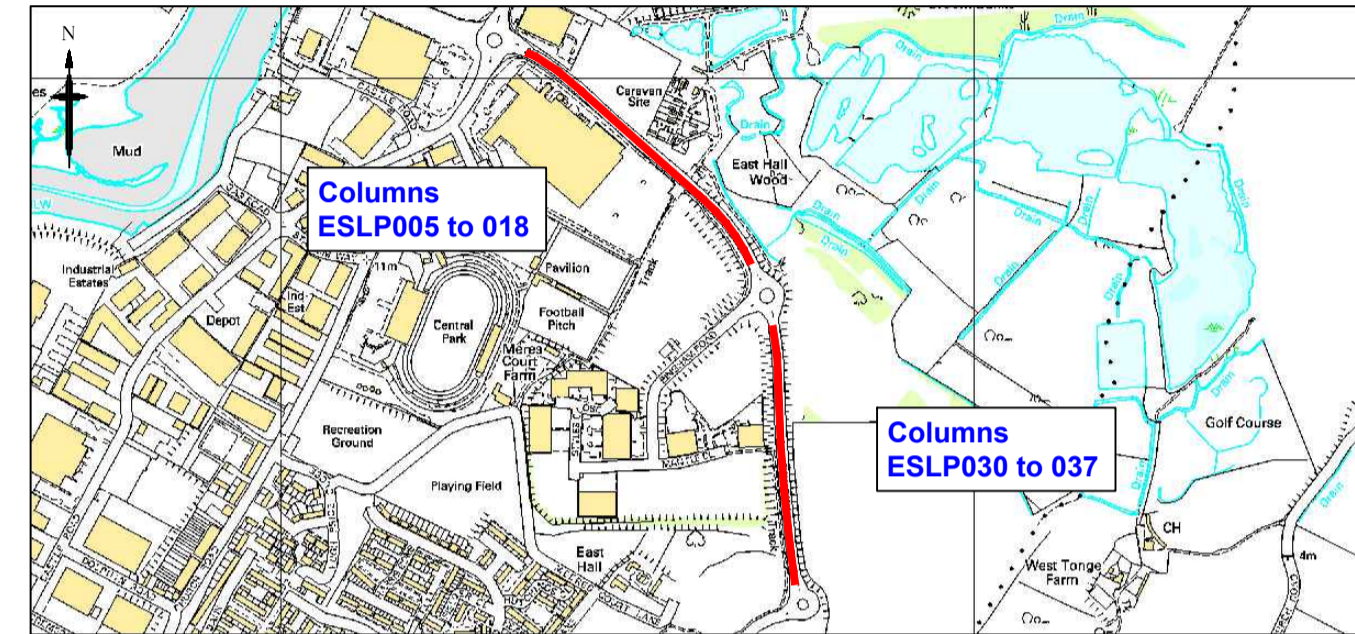
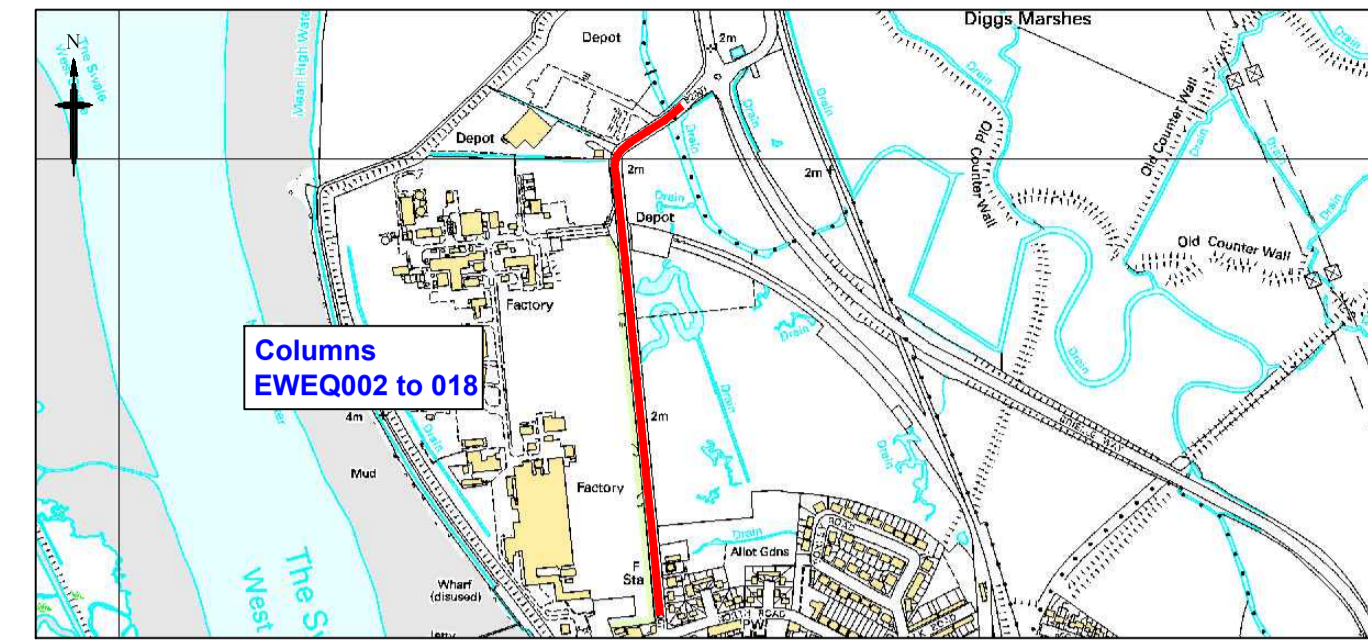
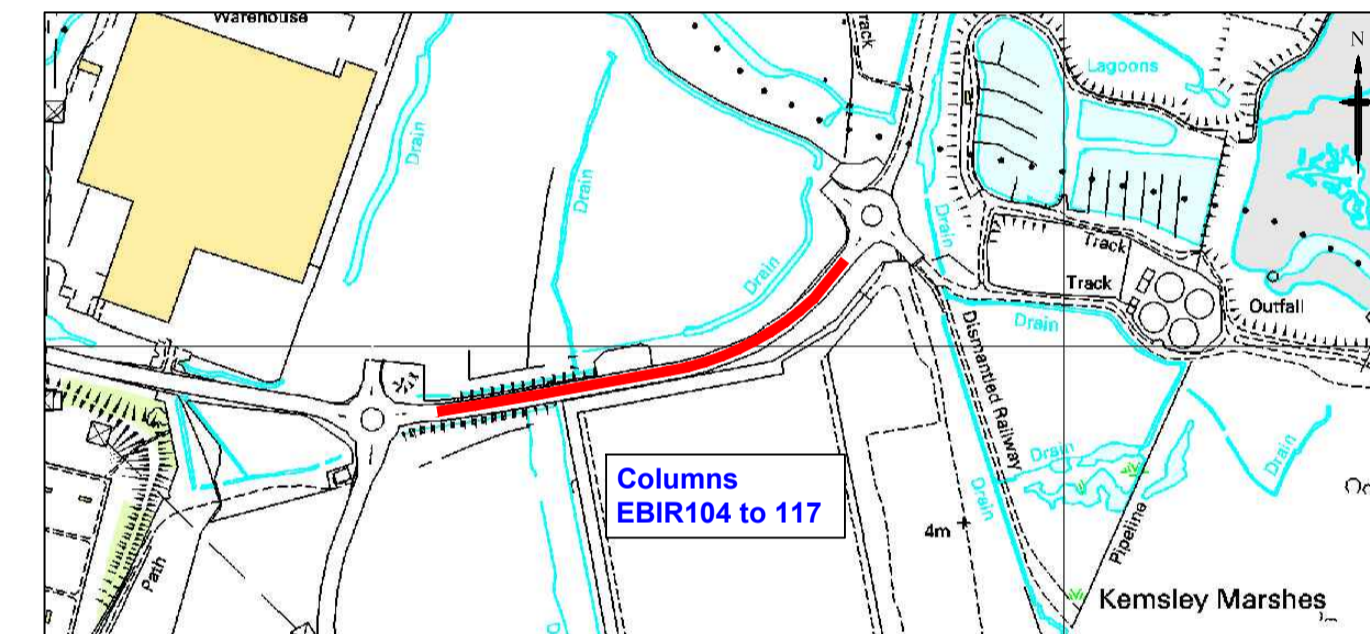


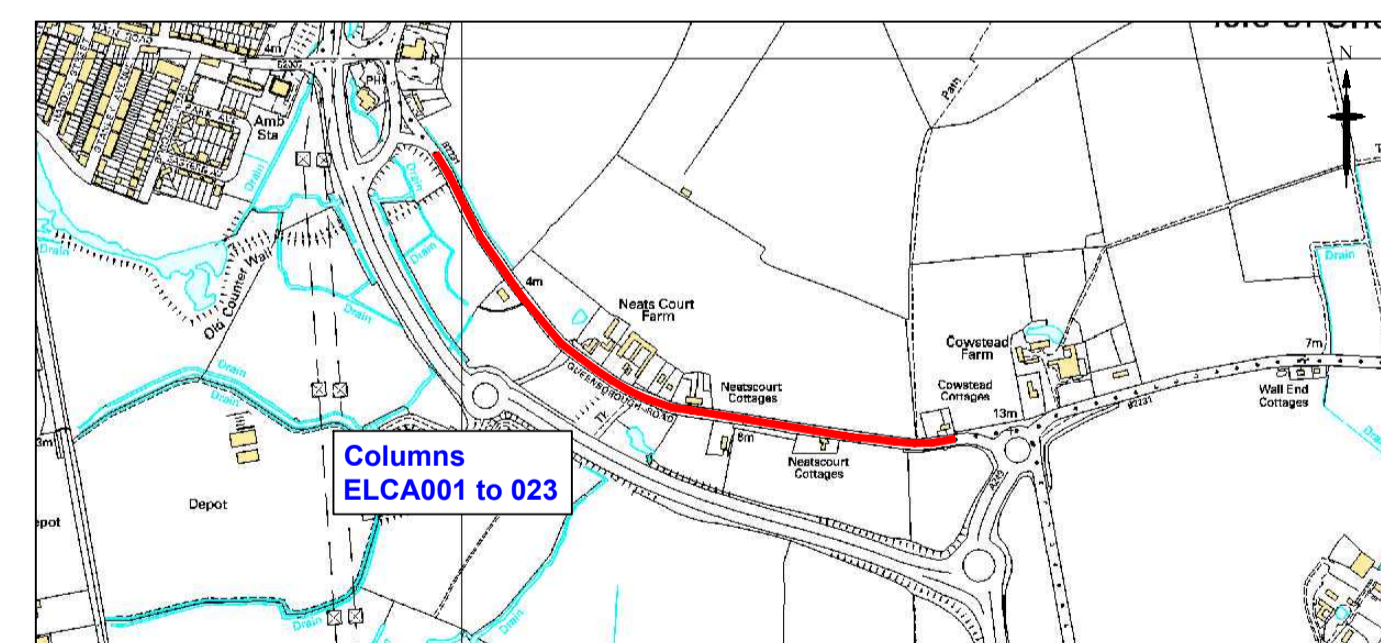
**Whiteway Road**



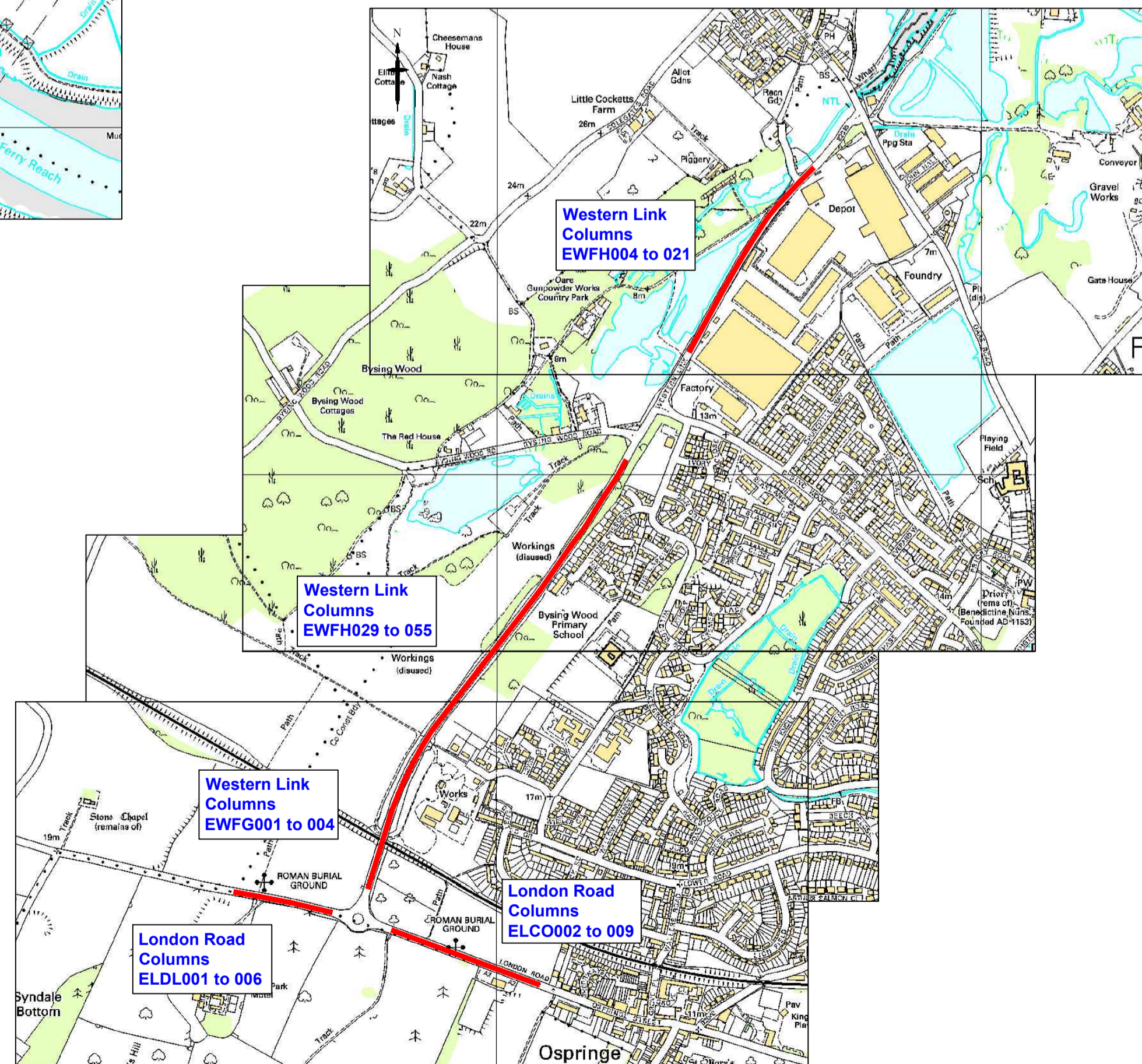
**Swale Way**



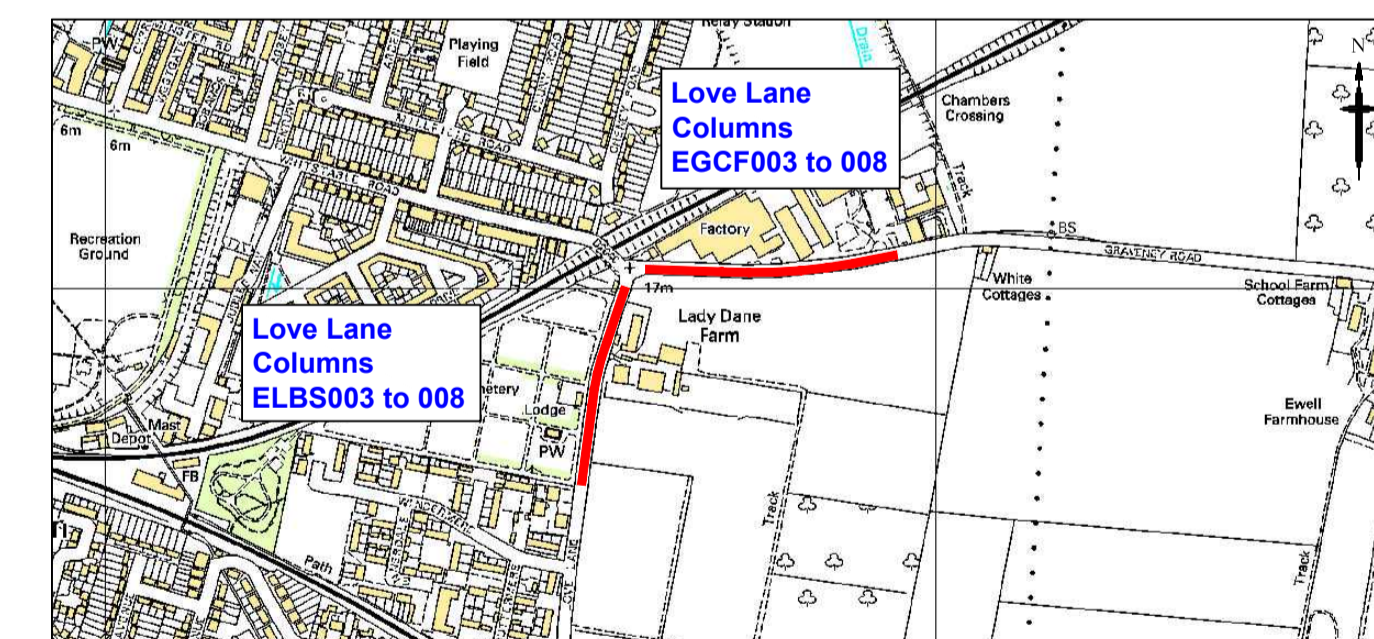
**Barge Way**



**Queenborough Road**



**A2 London Road & Western Link. Ospringe**



**Love Lane & Graveney Road**

**KEY**

- Extent of Columns to be switched off.
- Column Ref No. of columns to be switched off.

Rev	Revision Date	Purpose of revision	Drawn	Checked	Approved
3	20.02.2013	Swanetree Avenue Removed	HC	CH	CH
2	06.02.2013	Plan Revised for JTB	HC	CH	CH
1	22.01.2013	Notes changed to indicate switch off	HC	CH	CH
0	12.12.2012		HC	CH	CH



Kent County Council  
Ashford Highway Depot, Javelin Way,  
Ashford, Kent, TN24 8AD  
Tel: 08458 247 800

Project  
Safe and Sensible Street Lighting  
Phase 1  
Trial Switch Off of Surplus Lights

**Location Plan - Swale District**

Drawing status  
For Consultation

Scale	Not to Scale	Do not scale
-------	--------------	--------------

Drawing number	KCC/HL/ESP/Swale/01	Rev	3
----------------	---------------------	-----	---

This drawing is not to be used in whole or part other than for the intended purpose and project as defined on this drawing. Refer to the contract for full terms and conditions.

**SWALE**